

Flood Hazard Map

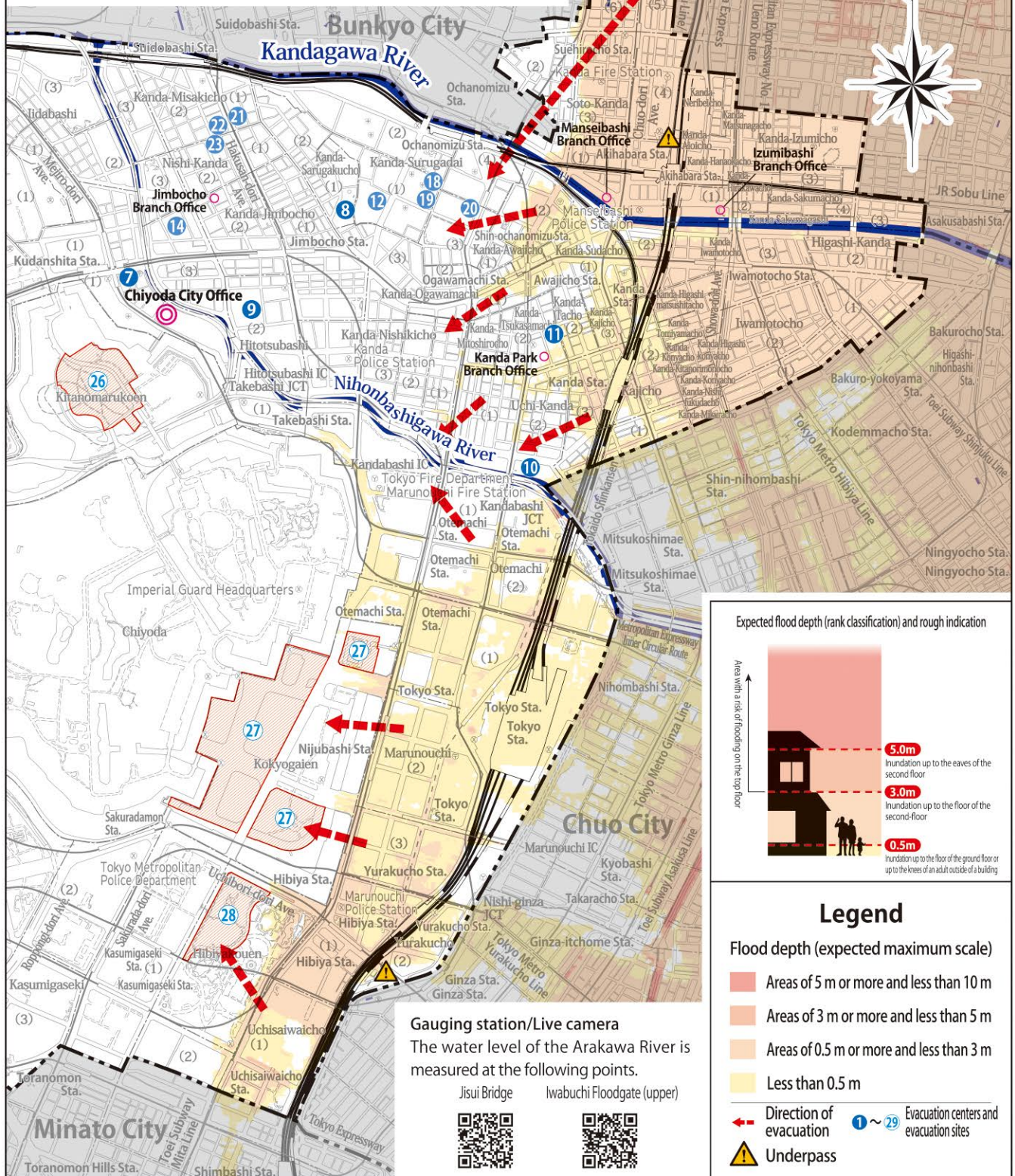
Arakawa River version (flood depth)

Based on the flood inundation-expected area map of the Arakawa River system published by the Ministry of Land, Infrastructure, Transport and Tourism on May 30, 2016, this map shows the area where the banks of the Arakawa River break and the overflowing water floods the surface of the earth and the extent of the flood, as well as evacuation centers. The areas where a flood is expected and the extent of the flood are simulated based on the maximum assumable rainfall (72-hour total rainfall of 632 mm). However, even outside of the flood-expected areas shown on the map, a flood may occur depending on the circumstances, so please be very careful.

Because the flood duration is long, evacuate horizontally outside the flood-expected area.

1 : 20,000

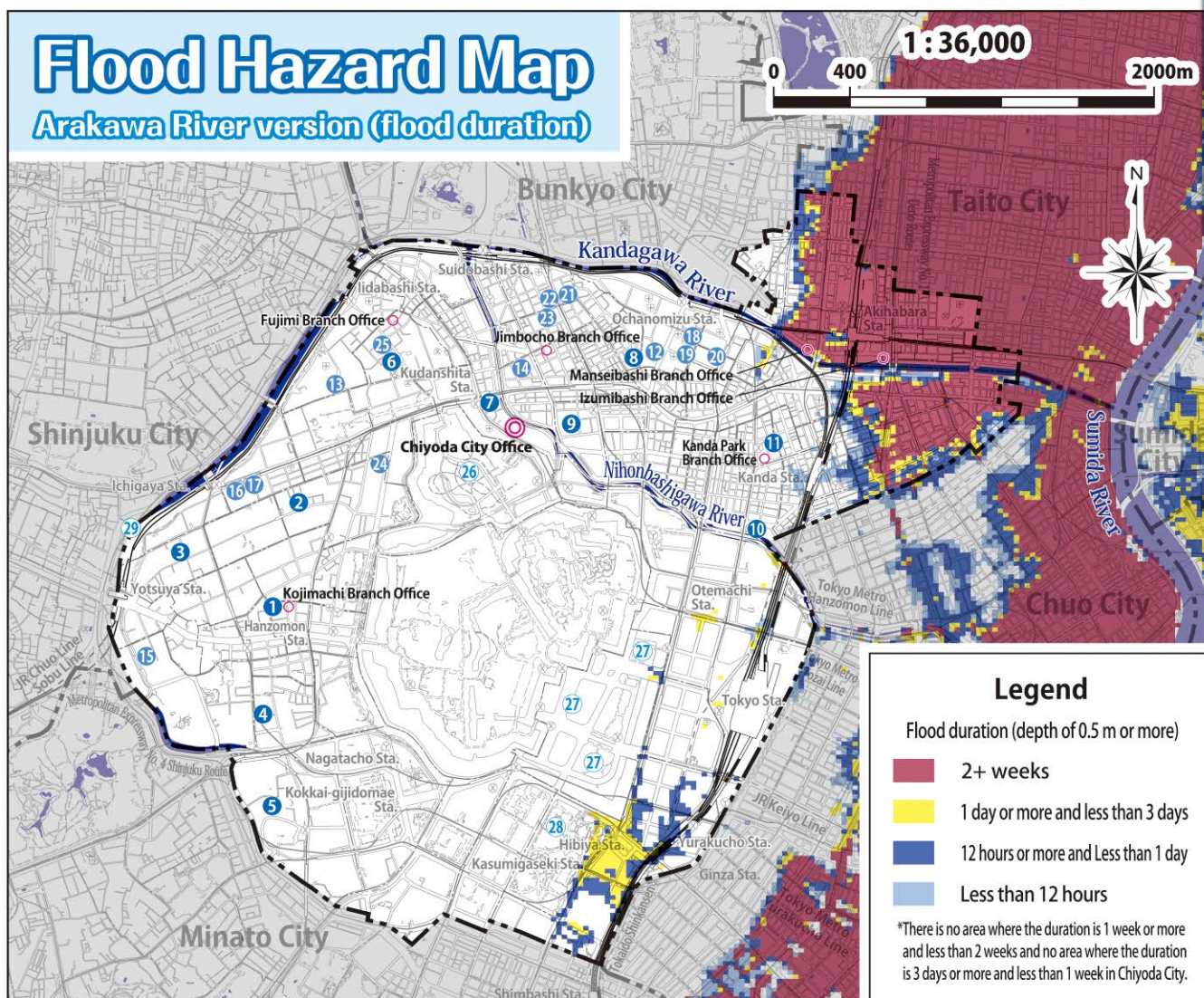
0 200 1000m



Evacuation centers and evacuation sites during floods (Arakawa River)

*Metropolitan Hibiya High School and Kudan Lifelong Learning Hall will not be opened immediately after a disaster.

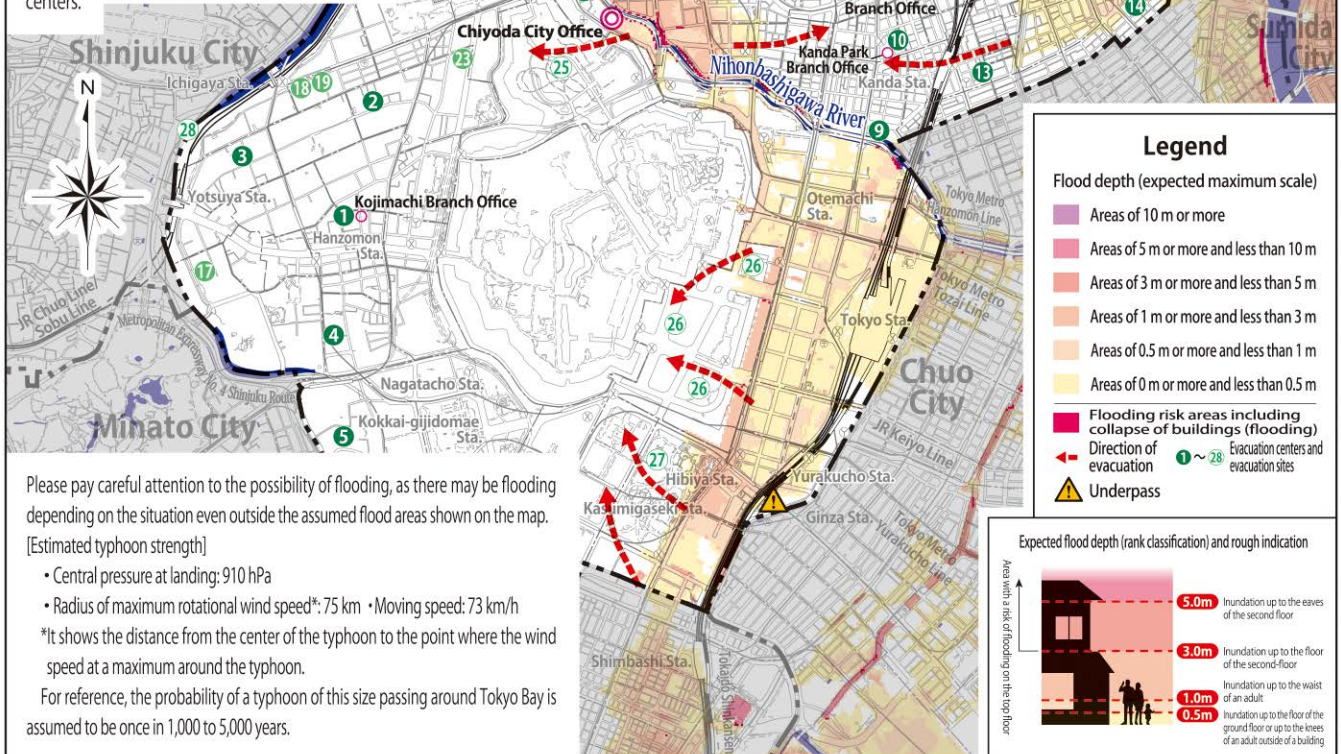
No.	Facility name	Location	No.	Facility name	Location
1	Kojimachi Elem. Sch.	Kojimachi 2 - 8	16	Nihon Univ. Hall	Kudan-minami 4 - 8 - 24
2	Kudan Elem. Sch.	Sanbancho 16	17	Nihon Univ. Distance Learning Division	Kudan-minami 4 - 8 - 28
3	Bancho Elem. Sch.	Rokubancho 8	18	Nihon Univ. School of Dentistry	Kanda-Surugadai 1 - 8 - 13
4	Kojimachi J. H. Sch.	Hirakawacho 2 - 5 - 1	19	Nihon Univ. College of Science and Technology (1)	Kanda-Surugadai 1 - 8 - 14
5	Metropolitan Hibiya High School	Nagatacho 2 - 16 - 1	20	Nihon Univ. College of Science and Technology (2)	Kanda-Surugadai 3 - 11 - 2
6	Fujimi Mirai-kan	Fujimi 1 - 10 - 3	21	Nihon Univ. College of Economics	Kanda-Misakicho 1 - 3 - 2
7	Kudan Lifelong Learning Hall	Kudan-minami 1 - 5 - 10	22	Nihon Univ. College of Law (1)	Kanda-Misakicho 2 - 1 - 3
8	Ochanomizu Elem. Sch.	Kanda-Sarugakuchō 1 - 1 - 1	23	Nihon Univ. College of Law (2)	Nishi-Kanda 2 - 7 - 10
9	Kanda Hitotsubashi J. H. Sch.	Hitotsubashi 2 - 6 - 14	24	Nishogakusha Univ.	Sanbancho 6 - 16
10	City Sports Center	Uchi-Kanda 2 - 1 - 8	25	Nippon Dental Univ.	Fujimi 1 - 9 - 20
11	Kanda Sakura-kan	Kanda-Tsukasamachi 2 - 16	26	Kitanomaru Park	Kitanomaru Park 1, etc.
12	Meiji Univ.	Kanda-Surugadai 1 - 1	27	Kokyo Gaien	Kokyogaien 1, etc.
13	Hosei Univ.	Fujimi 2 - 15 - 3	28	Metropolitan Hibiya Park	Hibiyakouen 1
14	Senshu Univ.	Kanda-Jimbocho 3 - 8	29	Sotobori Park	Gobanchosaki
15	Sophia Univ.	Kioicho 7 - 1			



Arakawa River version
(flood depth and flood duration)
Flood Hazard Map

Storm Surge Hazard Map (flood depth)

Based on the areas designated by the Tokyo Metropolitan Government on December 19, 2024, this map shows the areas along the Tokyo Bay coast where flooding due to the largest storm surge is expected to occur from beaches and rivers (assumed storm surge flood areas), the depth and duration of flood, and the evacuation centers.



Please pay careful attention to the possibility of flooding, as there may be flooding depending on the situation even outside the assumed flood areas shown on the map. [Estimated typhoon strength]

- Central pressure at landing: 910 hPa
- Radius of maximum rotational wind speed*: 75 km
- Moving speed: 73 km/h

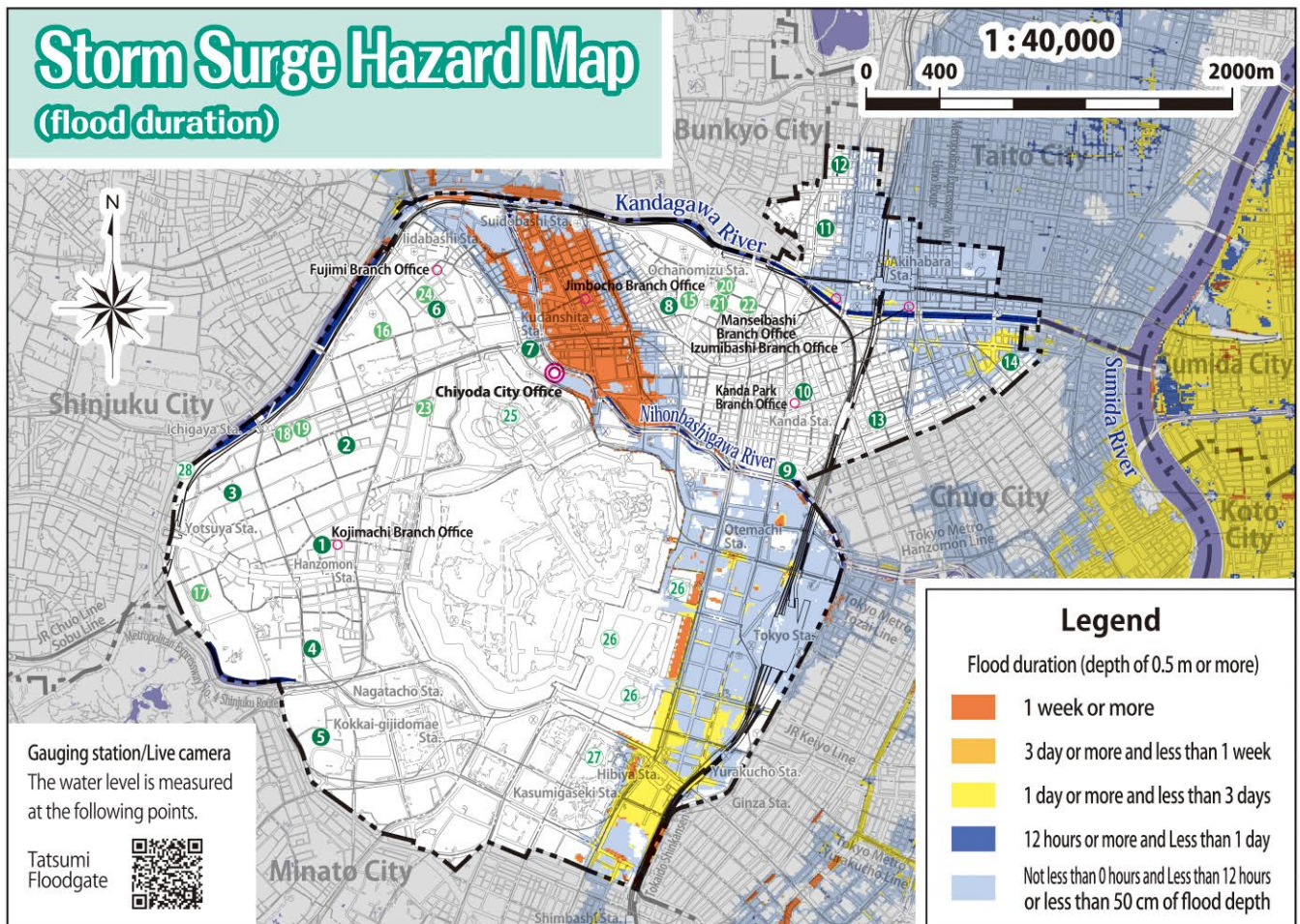
*It shows the distance from the center of the typhoon to the point where the wind speed at a maximum around the typhoon.

For reference, the probability of a typhoon of this size passing around Tokyo Bay is assumed to be once in 1,000 to 5,000 years.

Evacuation centers and evacuation sites at a storm surge occurrence

*Metropolitan Hibiya High School and Kudan Lifelong Learning Hall will not be opened immediately after a disaster.

No.	Facility name	Location	No.	Facility name	Location
①	Kojimachi Elem. Sch.	Kojimachi 2-8	⑮	Meiji Univ.	Kanda-Surugadai 1-1
②	Kudan Elem. Sch.	Sanbancho 16	⑯	Hosei Univ.	Fujimi 2-15-3
③	Bancho Elem. Sch.	Rokubancho 8	⑰	Sophia Univ.	Kioicho 7-1
④	Kojimachi J. H. Sch.	Hirakawacho 2-5-1	⑱	Nihon Univ. Hall	Kudan-minami 4-8-24
⑤	Metropolitan Hibiya High School	Nagatacho 2-16-1	⑲	Nihon Univ. Distance Learning Division	Kudan-minami 4-8-28
⑥	Fujimi Mirai-kan	Fujimi 1-10-3	⑳	Nihon Univ. School of Dentistry	Kanda-Surugadai 1-8-13
⑦	Kudan Lifelong Learning Hall	Kudan-minami 1-5-10	㉑	Nihon Univ. College of Science and Technology (1)	Kanda-Surugadai 1-8-14
⑧	Ochanomizu Elem. Sch.	Kanda-Sarugakuchō 1-1-1	㉒	Nihon Univ. College of Science and Technology (2)	Kanda-Surugadai 3-11-2
⑨	City Sports Center	Uchi-Kanda 2-1-8	㉓	Nishogakusha Univ.	Sanbancho 6-16
⑩	Kanda Sakura-kan	Kanda-Tsukasamachi 2-16	㉔	Nippon Dental Univ.	Fujimi 1-9-20
⑪	Shohei Domu-kan	Soto-Kanda 3-4-7	㉕	Kitanomaru Park	Kitanomaru-koen 1, etc.
⑫	Chiyoda Art Square (former Arts Chiyoda 3331) *It cannot be used due to renovation work.	Soto-Kanda 6-11-14	㉖	Kokyo Gaen	Kokyogaen 1, etc.
⑬	Former Imagawa Junior High School	Kajicho 2-4-2	㉗	Metropolitan Hibiya Park	Hibiyakouen 1
⑭	Metropolitan Hitotsubashi High School	Higashi-Kanda 1-12-13	㉘	Sotobori Park	Gobanchosaki



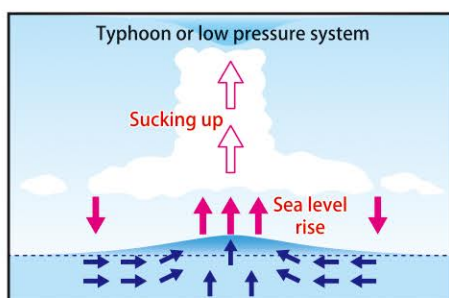
Mechanism of storm surge occurrence

There are two main factors that cause storm surges.

1. Sea surface suction due to atmospheric depression

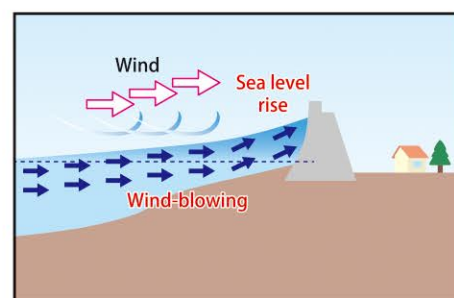
Because the central pressure of typhoons or low pressure systems is lower than that of the surrounding area, the surrounding air pushes against the sea surface, and the air near the center acts to suck up the sea surface, resulting in a rise in the sea level.

When the pressure drops by 1 hectopascal (hPa), the sea level rises by about 1 centimeter.



2. Seawater pushed by wind

When the strong winds associated with typhoons blow from offshore toward the coast, the winds push seawater onshore, causing sea levels near the coast to rise abnormally. The shallower the water depth, the stronger the wind-blowing acts and the more likely a storm surge is to occur.



Why does storm surge damage occur even in areas far from the sea?

Due to sea level rise caused by storm surge, the water level of rivers in Chiyoda City also rises. Then the water level rise caused by rainfall from a large typhoon is added to this, flooding damage is assumed when rivers cannot handle the rainfall and overflow. Even in Chiyoda City, there is a possibility of overtopping due to the rising water level of Kandagawa River and Nihonbashigawa River.

In addition, since water flows in from Tokyo Bay beyond the revetment, damage by wave overtopping is also expected on the south side of the city.



Sediment Disaster Hazard Map

This map shows the “Sediment Disaster Warning Area, etc.” designated by the Tokyo Metropolitan Government on September 26, 2019, based on the Sediment Disaster Countermeasures Act*, and also the evacuation centers for Sediment disasters. The designation may be canceled when the danger is no longer present. Please check the city website for the latest designation status.

*The formal name is the "Act on Sediment Disaster Countermeasures for Sediment Disaster Prone Areas."

What are the Sediment Disaster Warning Area and the Sediment Disaster Special Warning Area?

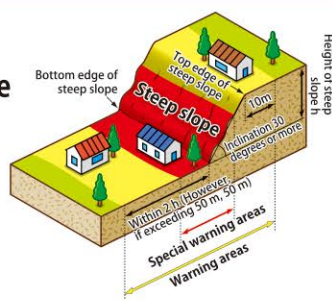
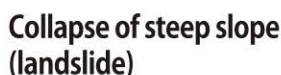
Designation criteria of the Sediment Disaster Warning Area (Yellow zone)

Areas designated according to criteria based on the topography and falling under the following:

- Areas with a slope of 30 degrees or more and a height of 5 meters or more
- Areas within a horizontal distance of 10 meters from the top edge of steep slopes
- Areas within 2 times the height of the steep slopes from the bottom edge of the steep slopes (up to 50 meters)

Designation criteria of the Sediment Disaster Special Warning Area (Red zone)

Areas where, in the event of the collapse of steep slopes, the movement of earth, stones, etc., could damage buildings and cause serious harm to the lives or bodies of residents

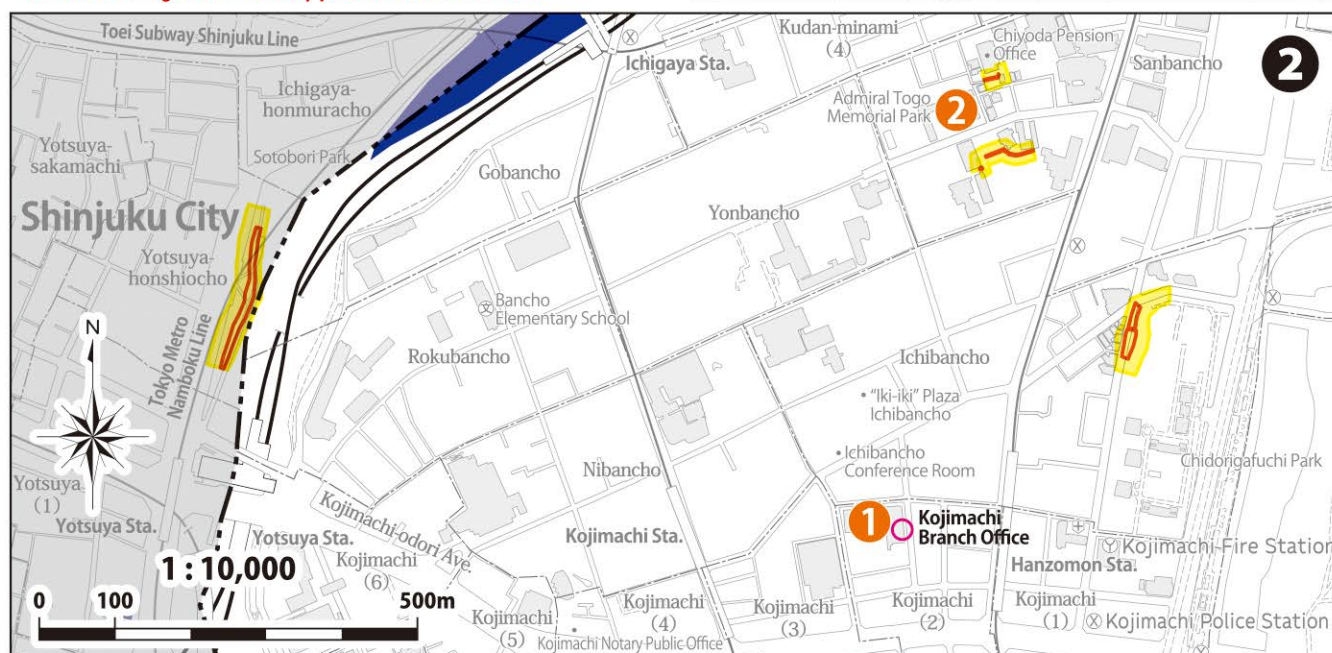
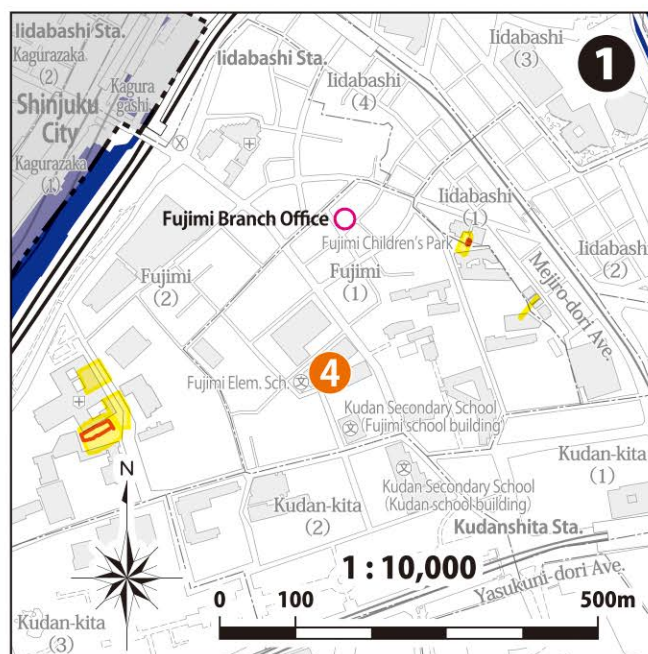


***When a heavy rain warning (landslide disaster) is announced, the Sediment Disaster Warning Areas of the city parks becomes off-limits.**

What is a landslide?

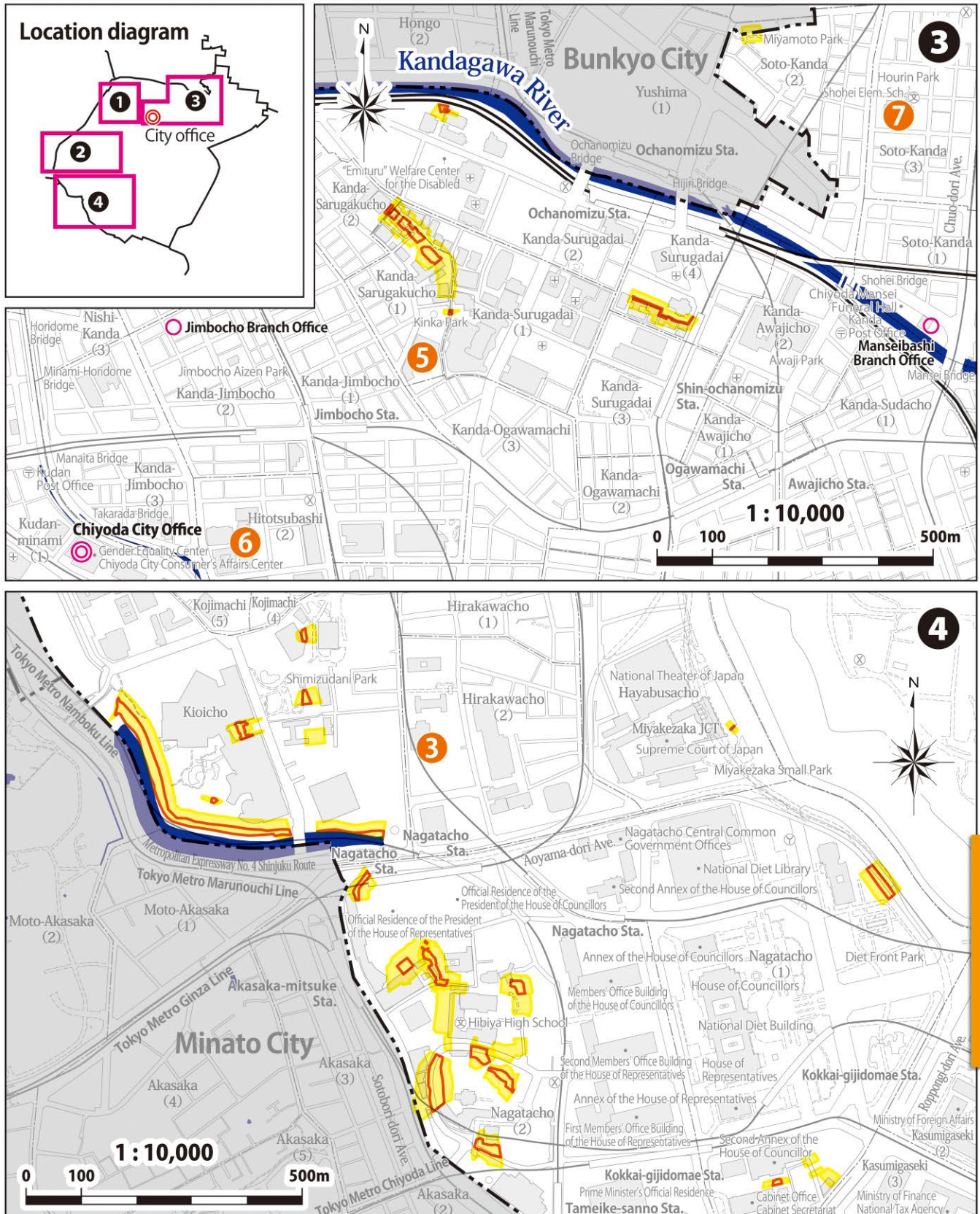
It is a phenomenon caused when moisture penetrates into the ground, weakening the soil's resistance and causing the slope to collapse suddenly due to the impact of rain or earthquakes.

There are three kinds of Sediment disasters, namely slope failure, debris flow, and landslide, and only slope failure is designated by Chiyoda City.



Evacuation centers during Sediment disaster

No.	Facility name	Location	No.	Facility name	Location
①	Kojimachi Elem. Sch.	Kojimachi 2 - 8	⑤	Ochanomizu Elem. Sch.	Kanda-Sarugakuchō 1 - 1 - 1
②	Kudan Elem. Sch.	Sanbancho 16	⑥	Kanda Hitotsubashi J. H. Sch.	Hitotsubashi 2 - 6 - 14
③	Kojimachi J. H. Sch.	Hirakawachō 2 - 5 - 1	⑦	Shohei Doumu-kan	Soto-Kanda 3 - 4 - 7
④	Fujimi Mirai-kan	Fujimi 1 - 10 - 3			



My Timeline of my family

Unlike disasters that cannot be predicted such as earthquakes, wind and flood damage such as typhoons are disasters that can be predicted in advance to some extent.

To protect precious lives, instead of taking action after a disaster occurs, prepare for a disaster by creating an action plan (My Timeline) in advance!

Applicable disaster		<input type="checkbox"/> Kandagawa River flood <input type="checkbox"/> Arakawa River flood <input type="checkbox"/> Storm Surge <input type="checkbox"/> Sediment Disaster		
Weather information and evacuation information	Names of family members	The path of the typhoon becomes clear. To 3 days before Typhoon occurrence Equivalent to Alert Level 1 Typhoon forecast Early warning information	The strength of the typhoon becomes clear. 2 days before Typhoon approach Equivalent to Alert Level 2 Heavy rain advisory Flood advisory Storm surge advisory	The typhoon becomes gradually 1 day Typhoon Equivalent to Alert Level 3 Heavy rain warning Flood warning Storm surge advisory (likely to switch to warning)
		Example of description (for Arakawa River flood) Sakura (mother) <ul style="list-style-type: none"> • Check the weather information. • Contact relatives at the evacuation site. 	• Check items to be taken in case of emergency. • Bring potted plants, laundry poles, etc., inside.	• Fill a bathtub with water. • Prepare water bags.
Example of description (for Arakawa River flood) Aoi (child, junior high school student) <ul style="list-style-type: none"> • Consult between family members about response to typhoon. • Check evacuation sites. 	• Treat windows of the house. • Prepare a pet cage. • Check the planned suspension of public transportation service.	• Prepare cash. • Check the service status of public transportation.		

Name	Cell phone numbers of family members

Name	Companies and schools your family members belong to



Be sure to consider your pet's evacuation plan!

This sheet can be downloaded from the city website, so please use it!



Assumed flood depth	flood duration	Evacuation site
m		

before approach	The day Typhoon landfall and closest approach	Occurrence of disaster Direct hit of typhoon	Remarks
Alert Level 3 Evacuation of the elderly, etc.	Alert Level 4 Evacuation instructions Equivalent to Alert Level 4 Landslide warning information Storm surge warning and storm surge special warning	Alert Level 5 Emergency safety ensuring *Let's write down actions to protect your life in case you fail to escape. Equivalent to Alert Level 5 Heavy rain emergency warning	Please write down anything about the cautionary notes of each family member's behavior!
• Check with the workplace to respond to typhoons.	• <u>Start evacuation to the relative's (uncle's) house.</u>	• Evacuate to the 2nd floor or higher of the apartment where we live!	• If we cannot get to the relative's (uncle's) house, we will evacuate to the ○○ elementary school.
• <u>Start evacuation to the relative's (uncle's) house</u> (evacuation with pets).	• Pay close attention to the weather information.	• Evacuate to the 2nd floor or higher of the apartment where we live!	• If I evacuate when my family members are away, I will evacuate with my friend △△ in the same apartment.

Disaster prevention memo

For our family, we start evacuating when it becomes []!!

If we get separated from family members, meet at []!!

Items to be taken in case of emergency

- | | | | | | |
|--------------------------------|---|----------------------------------|--|-------------------------------|--------------------------|
| <input type="checkbox"/> Water | <input type="checkbox"/> Emergency food | <input type="checkbox"/> Charger | <input type="checkbox"/> Everyday medicine | <input type="checkbox"/> Cash | <input type="checkbox"/> |
| <input type="checkbox"/> | <input type="checkbox"/> | <input type="checkbox"/> | <input type="checkbox"/> | <input type="checkbox"/> | <input type="checkbox"/> |

Disaster prevention-related organizations

Facility name	Telephone No.
Chiyoda City Office	3264-2111
Kojimachi Police Station	3234-0110
Marunouchi Police Station	3213-0110
Kanda Police Station	3295-0110
Manseibashi Police Station	3257-0110
Marunouchi Fire Station	3215-0119
Kojimachi Fire Station	3264-0119
Kanda Fire Station	3257-0119
Tokyo Metropolitan Government 1st Construction Office	3542-0682
Waterworks Bureau Chiyoda Office	5298-5351
Sewerage Bureau Chubu Sewerage Office	3270-8317
TEPCO Power Grid, Incorporated	0120-995-007
Tokyo Gas Customer Center	0570-002211
NTT East Corp. (General Information)	116

Emergency medical facilities

Disaster base hospital	
Facility name	Location
Nihon University Hospital	Kanda-Surugadai 1-6
Mitsui Memorial Hospital	Kanda-Izumicho 1
Disaster base cooperation hospitals	
Facility name	Location
Tokyo Teishin Hospital	Fujimi 2-14-23
Sanraku Hospital	Kanda-Surugadai 2-5
Disaster medical support hospitals	
Facility name	Location
Kyoundo Hospital	Kanda-Surugadai 1-8
Nihon University School of Dentistry Dental Hospital	Kanda-Surugadai 1-8-13
Inoue Eye Hospital	Kanda-Surugadai 4-3
Kamio Memorial Hospital	Kanda-Awajicho 2-25
Tokyo Dental College Suidobashi Hospital	Kanda-Misakicho 2-9-18
Hamada Hospital (Obstetrics and Gynecology)	Kanda-Surugadai 2-5
Meiwa Hospital (Dialysis)	Kanda-Sudacho 1-18
Kudanzaka Hospital	Kudan-minami 1-6-12
Hanzomon Hospital (Dialysis)	Kojimachi 1-10
Nippon Dental University Hospital	Fujimi 2-3-16

List of evacuation centers and sites

Facility name	Location	Kanagawa Pref.	Arakawa River	Storm surge	Seismic intensity
Kojimachi Elem. Sch.	Kojimachi 2-8	1	1	1	1
Kudan Elem. Sch.	Sanbancho 16	2	2	2	2
Bancho Elem. Sch.	Rokubancho 8	3	3	3	×
Kojimachi J. H. Sch.	Hirakawacho 2-5-1	4	4	4	3
Metropolitan Hibiya High School	Nagatacho 2-16-1	5	5	5	×
Fujimi Mirai-kan	Fujimi 1-10-3	6	6	6	4
Kudan Lifelong Learning Hall	Kudan-minami 1-5-10	7	7	7	×
Ochanomizu Elem. Sch.	Kanda-Sarugakucho 1-1-1	8	8	8	5
Kanda Hitotsubashi J. H. Sch.	Hitotsubashi 2-6-14	9	9	×	6
City Sports Center	Uchi-Kanda 2-1-8	10	10	9	×
Kanda Sakura-kan	Kanda-Tsukasamachi 2-16	11	11	10	×
Shohei Domu-kan	Soto-Kanda 3-4-7	12	×	11	7
Chiyoda Art Square (former Arts Chiyoda 3331) <small>*It cannot be used due to renovation work.</small>	Soto-Kanda 6-11-14	13	×	12	×
Chiyoda Parkside Plaza	Kanda-Izumicho 1	14	×	×	×
Former Imagawa Junior High School	Kajicho 2-4-2	15	×	13	×
Metropolitan Hitotsubashi High School	Higashi-Kanda 1-12-13	16	×	14	×
Iwamotocho "Hohoemi" Plaza	Iwamotocho 2-15-3	17	×	×	×
Meiji Univ.	Kanda-Surugadai 1-1	×	12	15	×
Hosei Univ.	Fujimi 2-15-3	×	13	16	×
Senshu Univ.	Kanda-Jimbocho 3-8	×	14	×	×
Sophia Univ.	Kioicho 7-1	×	15	17	×
Nihon Univ. Hall	Kudan-minami 4-8-24	×	16	18	×
Nihon Univ. Distance Learning Division	Kudan-minami 4-8-28	×	17	19	×
Nihon Univ. School of Dentistry	Kanda-Surugadai 1-8-13	×	18	20	×
Nihon Univ. College of Science and Technology (1)	Kanda-Surugadai 1-8-14	×	19	21	×
Nihon Univ. College of Science and Technology (2)	Kanda-Surugadai 3-11-2	×	20	22	×
Nihon Univ. College of Economics	Kanda-Misakicho 1-3-2	×	21	×	×
Nihon Univ. College of Law (1)	Kanda-Misakicho 2-1-3	×	22	×	×
Nihon Univ. College of Law (2)	Nishi-Kanda 2-7-10	×	23	×	×
Nishogakusha Univ.	Sanbancho 6-16	×	24	23	×
Nippon Dental Univ.	Fujimi 1-9-20	×	25	24	×
Kitanomaru Park	Kitanomaruken 1, etc.	×	26	25	×
Kokyo Gaen	Kokyogaen 1, etc.	×	27	26	×
Metropolitan Hibiya Park	Hibiyakouen 1	×	28	27	×
Sotobori Park	Gobanchosaki	×	29	28	×

*Metropolitan Hibiya High School and Kudan Lifelong Learning Hall will not be opened immediately after a disaster.

Publication: **Disaster and Crisis Management Division,**
Chiyoda City
☎ 03-5211-4187 March, 2025

Map Preparation: **KOKUDOCCHIZU CO., LTD.**
☎ 03-3953-5879
(main number)

This map is a secondary use of a map that was created using basic map information with the approval by the Director-General of the Geospatial Information Authority of Japan.

