

# School life rules



Guidance Division, Children's Department.  
Education Board of Chiyoda City Government

# I. Basic School Routines and Daily Life at School

- Students start the day with a morning meeting after arriving at school.



- They raise their hand and ask questions when they need help in Japanese.



- Classroom duties help students learn to cooperate and take responsibility.



## 2. Notifications about Attendance, Absence and Early Departure

- School arrival and dismissal times are usually fixed.



- Please inform the school if your child will be late, absent, or leave early.



- The classroom teacher may contact parents or guardians.



### 3. Homework and Support at Home

- Homework may be assigned for study at home.
- It is a great support for children when parents or guardians watch over them and offer a little help if needed.



## 4. Items to Bring, and School Rules

- The school will inform you about what to bring through notices and the communication notebook.



- Items not needed for learning should not be brought to school.



# 5. School Lunches, Bento Boxes and Food Allergies

- If your child has food allergies, please be sure to consult with the school before classes begin.
- A doctor's note may be needed if food allergy management is required.



# 6. Handling Injuries and Illnesses at School

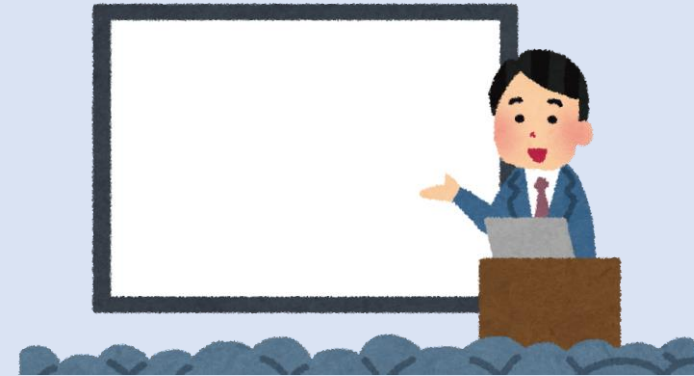
- In case of injury or illness at school, first aid will be provided in the school health room.
- Parents or guardians may be contacted and asked to pick up their child.
- In some cases, parents or guardians may be asked to take their child to a medical institution.





# 7. Parent-Teacher Meetings, Individual Consultations and Home Visits

- At parents' meetings, teachers talk about what students are learning, their grade and performance, school events, and daily life at school.



- Individual consultations and home visits will be conducted as necessary.





# 8. Handling Bullying and Other Issues at School

- The school takes a comprehensive approach to prevent bullying and other issues.



- If you have any concerns, no matter how small, please inform the school.



# 9. Dealing with Language and Cultural Differences

- Individual Japanese-language guidance and assistance using interpretation devices are provided for your child as needed.



- If your child does not understand the teacher's explanation, please do not hesitate to contact the school.



# 10. Individual Japanese-Language Guidance and Interpretation Support

- Interpretation support staff are provided if necessary, such as when you are worried about understanding Japanese properly and during parent-teacher meetings.
- A Japanese-language instructor visits the school once or twice a week to provide Japanese-language guidance.



(Day) (Month), 2026



If you have any concerns,  
please feel free to consult with us.

# School life rules



Guidance Division, Children's Department.  
Education Board of Chiyoda City Government